

What can Calistoga expect during the October 9 & 10 Public Safety Power Shut-Off

- The Public Safety Power Shut Off (PSPS) is anticipated to start at midnight tonight.
- PGE is planning on running the generators at the Hwy 29 Substation during the PSPS to power a portion of town -generally east of the Napa River. The generators are subject to being shut-off if weather conditions dictate. The attached map shows the approximate area to be powered by the generators.
- Please go to https://www.pge.com/en_US/safety/emergency-preparedness/natural-disaster/wildfires/psps-service-impact-map.page to look up your specific address to see if you will be without power.
- When the PSPS outage occurs, all areas of the City will be without power for approximately 2 hours while PGE isolates the area to be powered with the generators from the rest of the grid.
- The PSPS is anticipated to be over around noon on Thursday and restoration of power service will start as wind conditions allow. Restoration could take several days. All areas of the City will be without power for approximately 2 hours when PGE switches the area powered with the generators back to the grid.
- PGE will be setting up a Customer Resource Center at the Fair Grounds. Hours of operation are 8AM- 6PM. The Center will be a cooling center and charging station only.
- The City will have electrical charging stations at City Hall and the Fire Station 8 AM-4:30PM. City staff will be conducting wellness checks in the affected areas during the PSPS event.

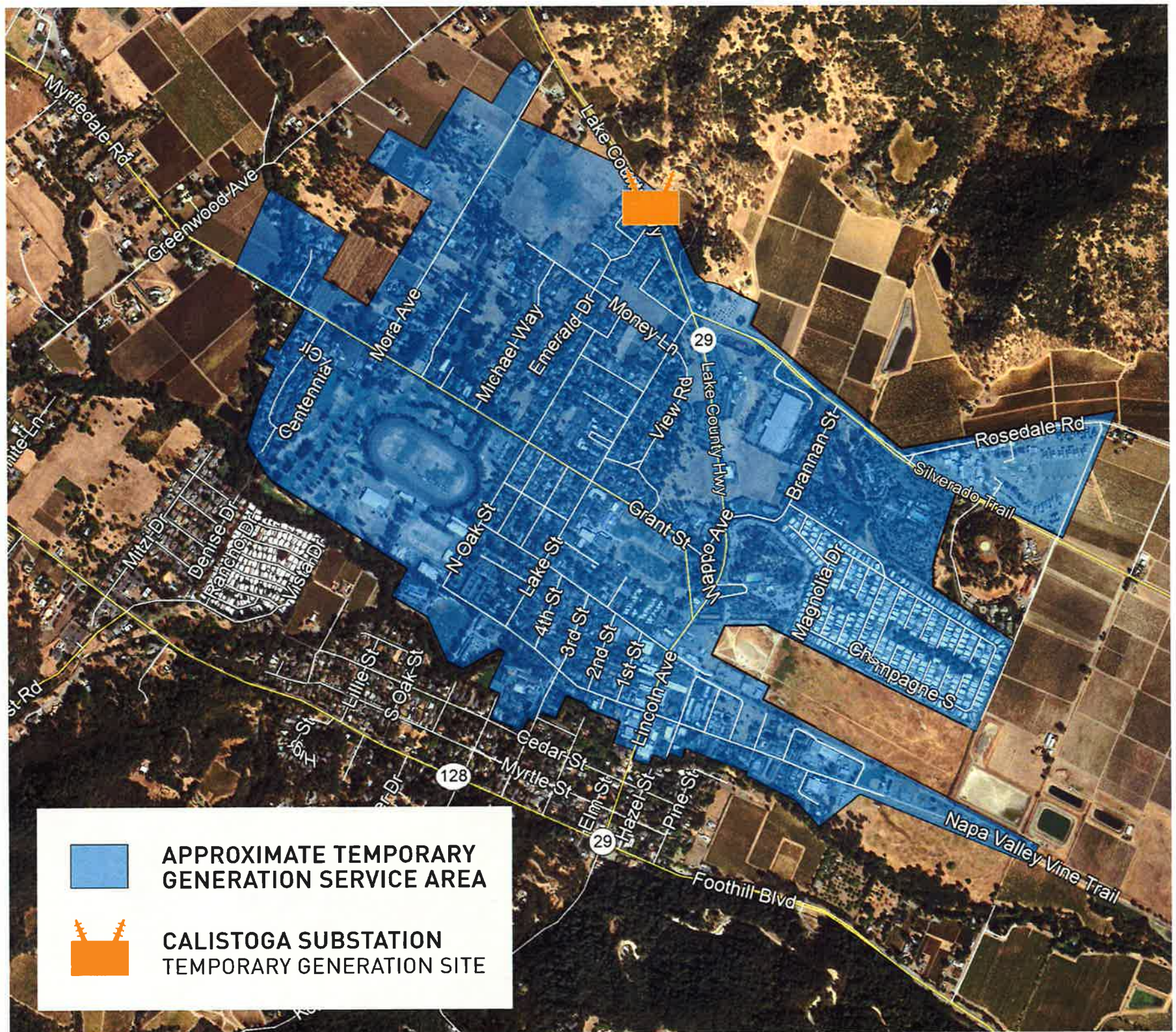
If you see or experience an emergency, please call 911. Please monitor your Nixie Alerts for updates.



Public Safety Power Shutoff Calistoga Power Continuity Plan Map

While Calistoga is largely served by lines that run through high fire-threat areas, the city itself is outside of a high fire-threat area. This, combined with the grid configuration within the city, can allow PG&E to provide temporary generation to Calistoga during a Public Safety Power Shutoff (PSPS) event.

The map below represents the approximate area that could be served by temporary generation from the Calistoga substation in the event that a public safety outage impacts downtown Calistoga. As always, weather conditions can change quickly. We remind our customers to have a plan and make sure we have your updated contact information.



Following the wildfires in 2017 and 2018, some of the changes included in this document are contemplated as additional precautionary measures intended to further reduce future wildfire risk. "PG&E" refers to Pacific Gas and Electric Company, a subsidiary of PG&E Corporation. ©2019 Pacific Gas and Electric Company. All rights reserved. CCR-0919-1619. 09/24/2019